



## Heavy-Duty Metal Protector

### Corrosion Inhibitor

AMSOIL Heavy-Duty Metal Protector (AMH) is an easy-to-use spray-on product that protects metal surfaces exposed to the damaging effects of salt, moisture or chemical corrosion. Ideal for steel, iron, aluminum, brass, copper and other metal surfaces.

- Contains additives that specifically protect against corrosion
- Displaces water and seals equipment from water intrusion
- Leaves a dry, long-lasting (up to several years), wax-like film
- Sprays into hard-to-reach places

### Applications

Automotive and trailer undercoat, spare tire carriers, battery terminals, tailgate hinges, handheld tools, snow plows, mower decks and blades, snowblowers, skid-steer attachments, farm machinery, fork lifts, metal gates/fences and much more

### Directions

Shake well before use. Clean target area prior to application. Apply in a uniform and even manner. For precision application, use extension straw. Allow to dry for two hours. For best results, allow to cure for 12 hours. Use AMSOIL Heavy-Duty Degreaser to remove overspray.

### Availability

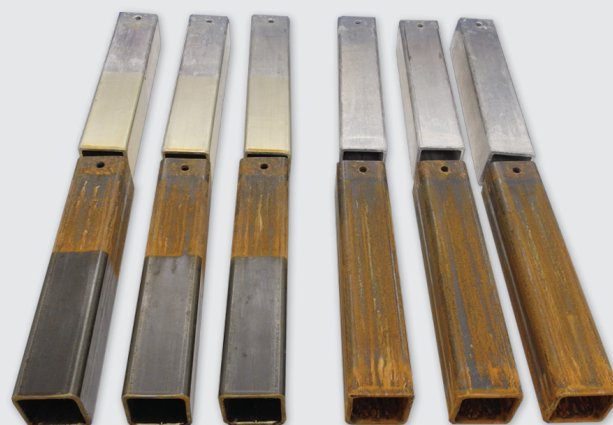
AMSOIL Heavy-Duty Metal Protector is available in 15-oz. spray cans.

### AMSOIL PRODUCT WARRANTY

AMSOIL products are backed by a Limited Liability Warranty. For complete information visit [www.amsoil.com/warranty.aspx](http://www.amsoil.com/warranty.aspx).

### HEALTH AND SAFETY STATEMENT

This product is not expected to cause health concerns when used for the intended applications and according to the recommendations in the Safety Data Sheet (SDS). An SDS is available online at [www.amsoil.com](http://www.amsoil.com) or upon request at (715) 392-7101. **Keep Out of Reach of Children.** Recycle used oil and bottle.



**TREATED**

**UNTREATED**

The three aluminum pieces in the upper left were treated with Heavy-Duty Metal Protector on their lower halves, while the three aluminum pieces in the upper right were untreated. The three steel pieces in the lower left were treated with Heavy-Duty Metal Protector on their lower halves, while the three steel pieces in the lower right were untreated. Following treatment, the pieces were placed in a 5 percent saltwater bath (the same salt and a similar solution to what vehicles and equipment are exposed to on winter roadways) for one hour, removed and allowed to dry for 23 hours. This process was repeated for 10 days. As seen in the pictures, the portions treated with Heavy-Duty Metal Protector show no signs of corrosion.

AMSOIL products and Dealership information are available from your local full-service AMSOIL Dealer.

